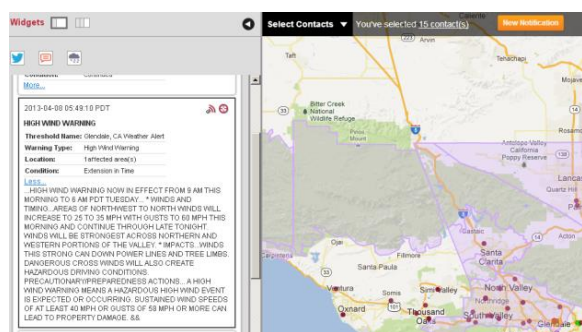
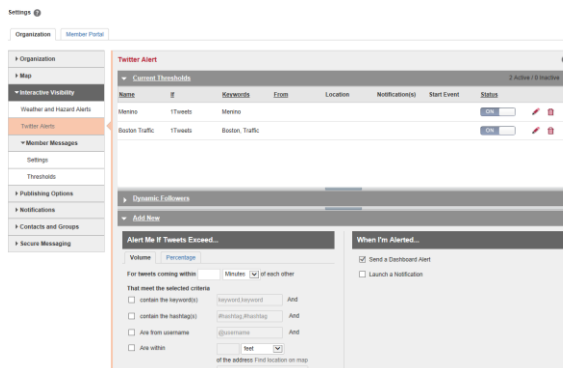


Quick Sheet MN: Interactive Visibility (Premium Feature)

Configuring Thresholds

Interactive Visibility allows you to monitor outside resources including weather, Twitter, and Mobile Member users from your organization. Alerts are configured by thresholds under the settings tab and are based on weather situations, Twitter keywords, and the ability for your members to share information. These thresholds can be configured to trigger a broadcast and/or trigger an alert on the Universe tab.

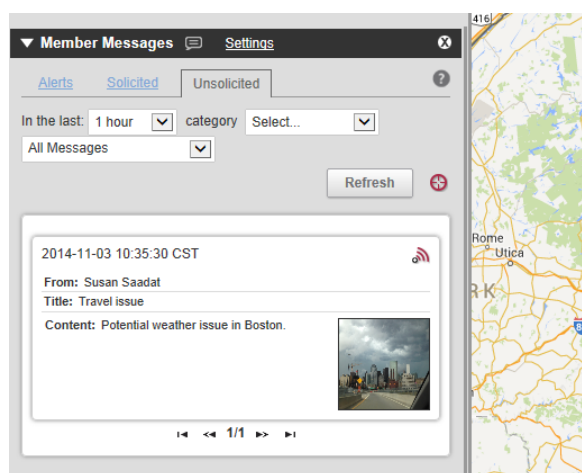
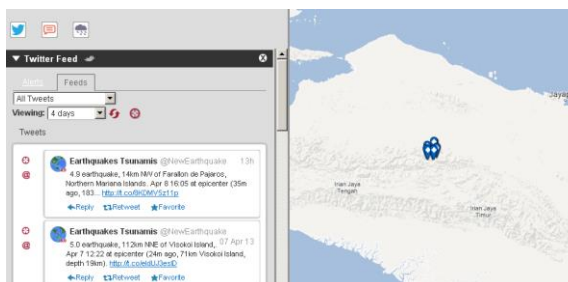


Weather Alerts

Everbridge uses weather alerts from the National Weather Service. Under the settings tab, the weather alert settings allow you to determine the types, severity, and location of weather incidents that will trigger an alert. A desktop alert appears on the Universe tab and notification template can be automatically selected when a weather event meets the criteria that is defined in the settings.

Twitter Alerts

Everbridge allows you to constantly monitor Twitter for users, keywords, and #hashtags that provide information that is of interest to your organization. Under the settings tab, the Twitter Alert settings allow you to determine which circumstances will trigger an alert. A desktop alert appears on the Universe tab and a notification template can also be used to initiate a notification to alert contacts that a threshold has been met.



Mobile Member Alerts

Mobile Member App Alerts allow members of your organization to communicate important information directly to you. Information is displayed in the Universe tab. Thresholds can be sent to trigger an alert in the Universe tab, and, optionally launch a notification. The messages can be geo tagged, and act as a basis for two way communication. For a member to use the mobile application they must log in using the same credentials they established when registering through the member portal.